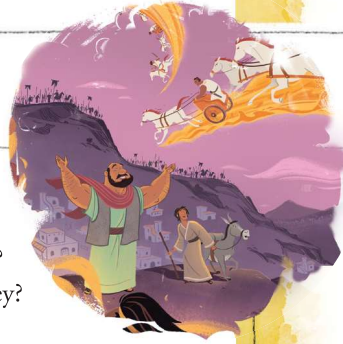


# Journal Page



- What does this story teach me about God or the gospel?
- What does this story teach me about myself?
- Are there any commands in this story to obey? How are they for God's glory and my good?
- Are there any promises in this story to remember? How do they help me trust and love God?
- How does this story help me to live on mission better?

## FAMILY DISCUSSION STARTERS

- Why was the king of Aram unable to capture Elisha?
- Share about a time when God "opened your eyes" to something that is true about Him.
- We can't see God, so how do we know He is with us? (See Galatians 2:20.)

## Elisha and the Army

2 Kings 6

### STORY POINT: GOD PROTECTED ELISHA WITH AN INVISIBLE ARMY.

The king of Aram was at war with Israel. Elisha sent messages to the king of Israel, warning him about the army's location. When the king of Aram found out that his plans had been discovered, he thought one of his own soldiers had told the king of Israel where they were staying. But the soldiers said, "We didn't tell! It was Elisha, the prophet in Israel."

The king of Aram heard that Elisha was in the city of Dothan. That night, he sent horses, chariots, and a large army to surround the city.

Elisha's servant saw the army surrounding them. "What are we going to do?" he asked Elisha.

Elisha said, "Don't be afraid. Our army outnumbers their army." The servant was confused. Then Elisha prayed, "LORD, open my servant's eyes and let him see."

So God opened the servant's eyes, and he saw horses and chariots of fire—the army of the LORD!—covering the mountain.

Then Elisha prayed for God to close the eyes of the Aramean army. God did, and they were blind. Elisha led them away to Samaria. Then he prayed for God to open their eyes, and the king sent them home. That army did not come into Israel again.

*Christ Connection: God opened the eyes of Elisha's servant so he could see God's protection. God is always with us. Jesus came to earth as the visible image of our invisible God. God's protection from sin and death is given to everyone who trusts in Jesus.*



FOLD



# Divine Protection

Color in the second letter and then every other letter to discover what God used to protect Elisha.



## Action and Response

Match each event to the response that followed.

Elisha warned the king of Israel about the Aramean army's location.

Elisha's servant saw the surrounding army and asked, "What are we going to do?"

Elisha prayed for God to close the eyes of the Aramean army.

Elisha told the army, "You're in the wrong city."

Elisha told the king of Israel to give the army food and water. Then the king sent them home.

-----  
-----

Elisha prayed that the Lord would open his servant's eyes. The servant saw the Lord's army.

Elisha led the Aramean army to Samaria.

The king of Aram sent an army to surround the city where Elisha was.

God closed the eyes of the Aramean army.

That army did not come into Israel again.